

**DE-AGGLOMERATION OF RAISINS AND OTHER DRIED FRUITS**

**PROBLEM**

During transportation and storage, dried fruits such as raisins, sultanas, pineapple pieces and dates tend to agglomerate, typically into 12.5 kg lumps. These 'blocks' of fruit are a major headache for food and confectionery manufacturers wishing to incorporate individual pieces of fruit into their products.

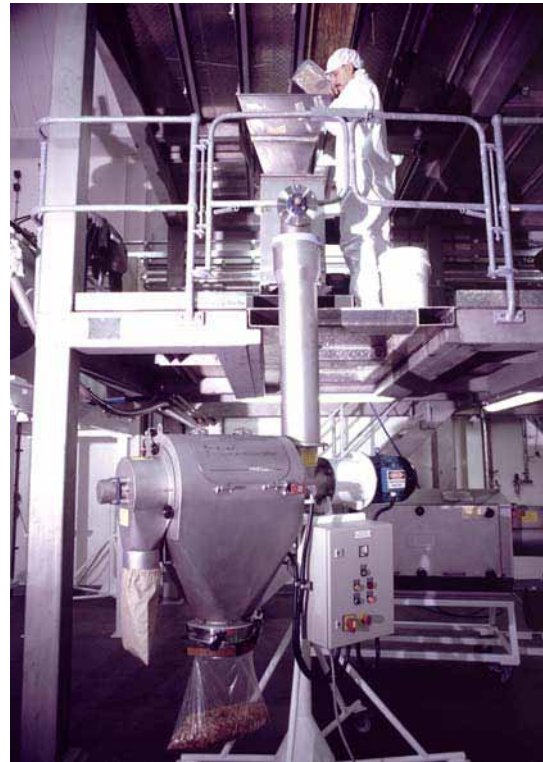
**REQUIREMENT**

An automated means of de-agglomerating blocks of dried fruit back to their original individual pieces with minimal damage which would otherwise spoil the appearance and appeal of the end product.

**SOLUTION**

A specially adapted KEK Centrifugal Sifter complete with feed hopper and metering feeder:-

- Rod type agitator in metering feeder acts as a pre-breaker.
- Sifter paddle assembly gently continues the breaking action whilst presenting de-agglomerated fruit to the



sieving screen through which it drops to be collected or conveyed away for incorporation with other ingredient before agglomeration can recommence all over again.

**BENEFITS**

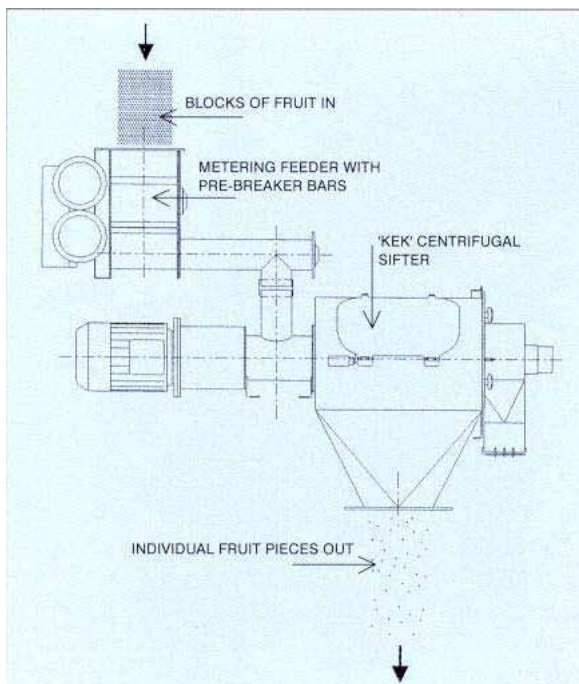
- Provides a batch or continuous supply of de-agglomerated fruit
- Minimal damage
- Reduces labour costs
- Hygienic, no manual contact
- Reduces waste

**REFERENCES**

- Cadbury
- Q Peanuts
- St. Ivel
- Dailycer

**APPLICATIONS**

- Raisins for chocolate and cereal bars
- Packets of nuts and raisins
- Muesli
- Other breakfast cereals containing dried fruit
- Fruits for cake production



**TEST REPORTS**

See test reports: -  
0014485  
0014502  
0014600  
0014782  
0014799

Kemutec  
130 Wharton Road  
Bristol, PA 19007  
Tel: 215 788 8013  
Fax: 215 788 5113  
Email: [Sales@KemutecUSA.com](mailto:Sales@KemutecUSA.com)  
Web: [www.KemutecUSA.com](http://www.KemutecUSA.com)